



JUANJUAN



FUZHOU JUAN JUAN NON-WOVEN PRODUCTS CO.,LTD
Add: No.20 ZhaoYu Road, FuWan Industrial Center, Cangshan
District,Fuzhou,Fujian,China
Mobile:0086-18065068870(WhatsApp)
www.jjwetwipes.com www.jjwipes.com



intertek
Total Quality. Assured.

FUZHOU JUAN JUAN NON-WOVEN PRODUCTS CO.,LTD

JUAN JUAN started the production of wet wipes since 2013. With Two buildings of five floors over 25,000 m2 of production area, Class 10 Clean Room, RO water system, 8 fully automatic production line of wet wipes, the daily productivity is over 200,000 to 250,000 packs/rolls of wet wipes (dry wipes). Juan Juan will assist you to catch the trend of the market on time for every project.

JUANJUAN already pass the test SGS, INTERTEK, CE, FDA certificate to comply with request of the global market. Our Variety of wet wipes ranges from personal care wipes, like baby and flushable, biodegradable wipes, disinfectant, alcohol and Hand Sanitizing wipes.

★ Material of the wipes range from embossed non woven fabric, Spunlace plain texture, EF texture, Airlaid fabric, thermal bond, Organic Cotton, Wood Pulp, etc. flushable and biodegradable eco-friendly materials.

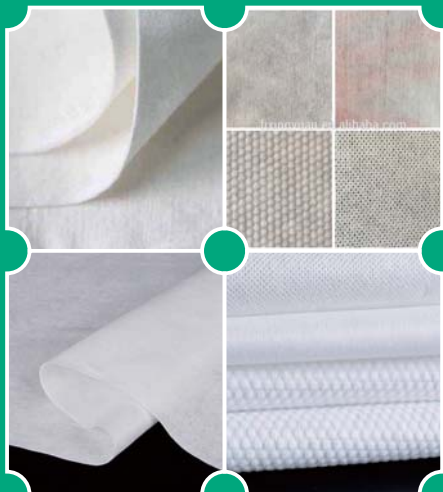
★ Formulation could be Alcohol 75%, Isopropyl alcohol, and Benzalkonium Chloride, etc.

★ Scents can be Aloe Vera, Lemon, Coconut Aroma, Mint, Tea Fragrance, Osmanthus, Cologne, etc.

★ As Five star OEM partner for Costco, Juan Juan already made Wet wipes for over 1000 brands of hotels/cosmetics, etc. all over the world. Juan Juan will comply with the various requests of private labels for different Packings such as sachets, refill pack, refill bag, canister, bucket, etc. Besides, Dry Wipes with safe packing with independent canister/bucket are also welcomed to save cost of transportation and importation tax. (75% Alcohol or Special Formula can be filled on the spot)

★ dry wipe + bucket/canister could be sold independently, cost of transportation and tax will be saved 30%

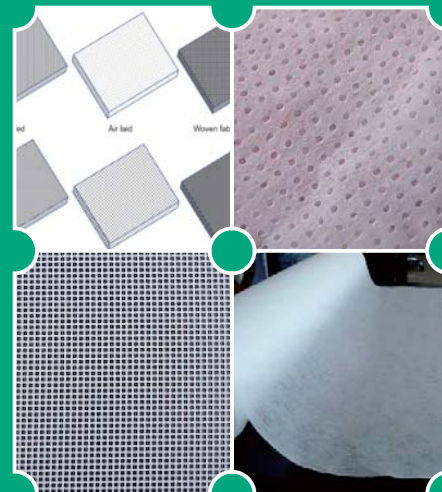
Spunlace plain texture



embossed non woven fabric



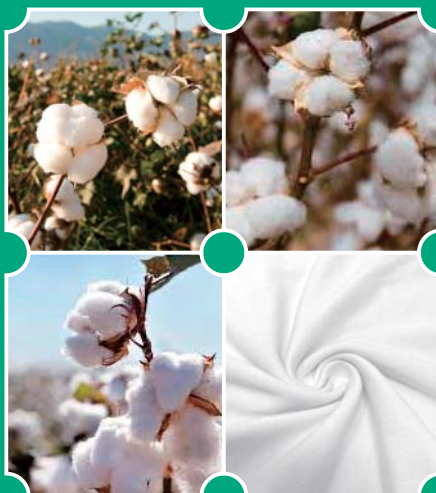
Airlaid fabric



thermal bond



Organic Cotton



Wood Pulp





002000

CASE Pack	2	2
SHEET SIZE	15x16cm	6"x6.4"
CASE Weight	19kgs	41lbs
CASE Dimensions	33x65x18cm	13.2"x26"x7.2"
UNIT Weight	9.5kgs	20.9lbs
UNIT Dimensions	32.5x32.5x15cm	13"x13"x6"
PALLET Pattern	5x10	5x10
CASES/PALLET	50	50
PALLET Weight	950kgs	2090lbs



001500

CASE Pack	2	2
SHEET SIZE	15x16cm	6"x6.4"
CASE Weight	10.8kgs	23.76lbs
CASE Dimensions	30x60x18cm	12"x24"x7.2"
UNIT Weight	4.86kgs	10.69lbs
UNIT Dimensions	28x28x15cm	11.2"x11.2"x6"
PALLET Pattern	6x10	6x10
CASES/PALLET	60	60
PALLET Weight	648kgs	1425.6lbs



001200

CASE Pack	4	4
SHEET SIZE	15x16cm	6"x6.4"
CASE Weight	24.5kgs	53.9kgs
CASE Dimensions	53x53x18cm	21.2"x21.2"x7.2"
UNIT Weight	5.8kgs	12.76lbs
UNIT Dimensions	26x26x15cm	10.4"x10.4"x6"
PALLET Pattern	6x8	6x8
CASES/PALLET	48	48
PALLET Weight	1176kgs	2587lbs



00800

CASE Pack	4	4
SHEET SIZE	15x16cm	6"x6.4"
CASE Weight	16.8kgs	36.96lbs
CASE Dimensions	40x50x18cm	16"x20"x7.2"
UNIT Weight	3.9kgs	8.58lbs
UNIT Dimensions	22.5x22.5x15cm	9"x9"x6"
PALLET Pattern	10x6	10x6
CASES/PALLET	60	60
PALLET Weight	1008kgs	2213.2lbs



00500

CASE Pack	4	4
SHEET SIZE	15x16cm	6"x6.4"
CASE Weight	10.8kgs	23.76lbs
CASE Dimensions	27x27x18cm	10.8"x10.8"x7.2"
UNIT Weight	2.43kgs	5.35lbs
UNIT Dimensions	12.5x12.5x15cm	5"x5"x6"
PALLET Pattern	12x10	12x10
CASES/PALLET	120	120
PALLET Weight	1296kgs	2851.2lbs



00400

CASE Pack	6	6
SHEET SIZE	15x16cm	6"x6.4"
CASE Weight	13.2kgs	29.04
CASE Dimensions	34x50x18cm	13.6"x20"x7.2"
UNIT Weight	2.2kgs	4.84lbs
UNIT Dimensions	16.5x16.5x15cm	6.6"x6.5"x6"
PALLET Pattern	9x8	9x8
CASES/PALLET	72	72
PALLET Weight	950kgs	2090lbs



11500

CASE Pack	2	2
SHEET SIZE	15x16cm	6"x6.4"
CASE Weight	5.8kgs	12.76lbs
CASE Dimensions	32x31x17cm	12.8"x12.4"x6.8"
UNIT Weight	2.2kgs	4.84kgs
UNIT Dimensions	14.5x14.5x17cm	5.8"x5.8"x6.8"
PALLET Pattern	12x12	12x12
CASES/PALLET	144	144
PALLET Weight	835kgs	1837lbs



111000

CASE Pack	2	2
SHEET SIZE	15x16cm	6"x6.4"
CASE Weight	5.8kgs	12.76lbs
CASE Dimensions	28.5x56x23cm	11.4"x22.4"x9.2"
UNIT Weight	0.436kgs	0.959lbs
UNIT Dimensions	27x27x21cm	10.8"x10.8"x8.4"
PALLET Pattern	2x3	2x3
CASES/PALLET	6	6
PALLET Weight	2.6kgs	5.72lbs



11100

CASE Pack	12	12
SHEET SIZE	15x16cm	6"x6.4"
CASE Weight	4.38kgs	9.636lbs
CASE Dimensions	36x47x18cm	14.4"x18.8"x7.2"
UNIT Weight	0.368kgs	0.81lbs
UNIT Dimensions	11.4x11.4x15cm	4.56"x4.56"x6"
PALLET Pattern	5x12	5x12
CASES/PALLET	60	60
PALLET Weight	2360kgs	5192lbs



11160

CASE Pack	12	12
SHEET SIZE	15x16cm	6"x6.4"
CASE Weight	11.5kgs	25.3lbs
CASE Dimensions	40x50x22cm	16"x20"x8.8"
UNIT Weight	0.368kgs	0.81lbs
UNIT Dimensions	20x20x12.4cm	8"x8"x4.96"
PALLET Pattern	5x11	5x11
CASES/PALLET	55	55
PALLET Weight	632.5kgs	1391.5lbs



2210

CASE Pack	180	180
SHEET SIZE	15x20cm	6"x8"
CASE Weight	11.3kgs	24.86lbs
CASE Dimensions	52x28x17cm	20.8"x11.2"x6.8"
UNIT Weight	0.1kgs	0.22kgs
UNIT Dimensions	20x10x1.5cm	8"x4"x0.6"



2250

CASE Pack	40	40
SHEET SIZE	15x20cm	6"x8"
CASE Weight	13kgs	28.6lbs
CASE Dimensions	53x34x17cm	21.2"x13.6"x6.8"
UNIT Weight	0.3kgs	0.66lbs
UNIT Dimensions	20x10x3.5cm	8"x4"x1.4"



2280

CASE Pack	24	24
SHEET SIZE	15x20cm	6"x8"
CASE Weight	16kgs	35.2lbs
CASE Dimensions	43x34x25cm	17.2"x13.6"x10"
UNIT Weight	0.49kgs	1.078lbs
UNIT Dimensions	20x10x4.5cm	8"x4"x1.8"



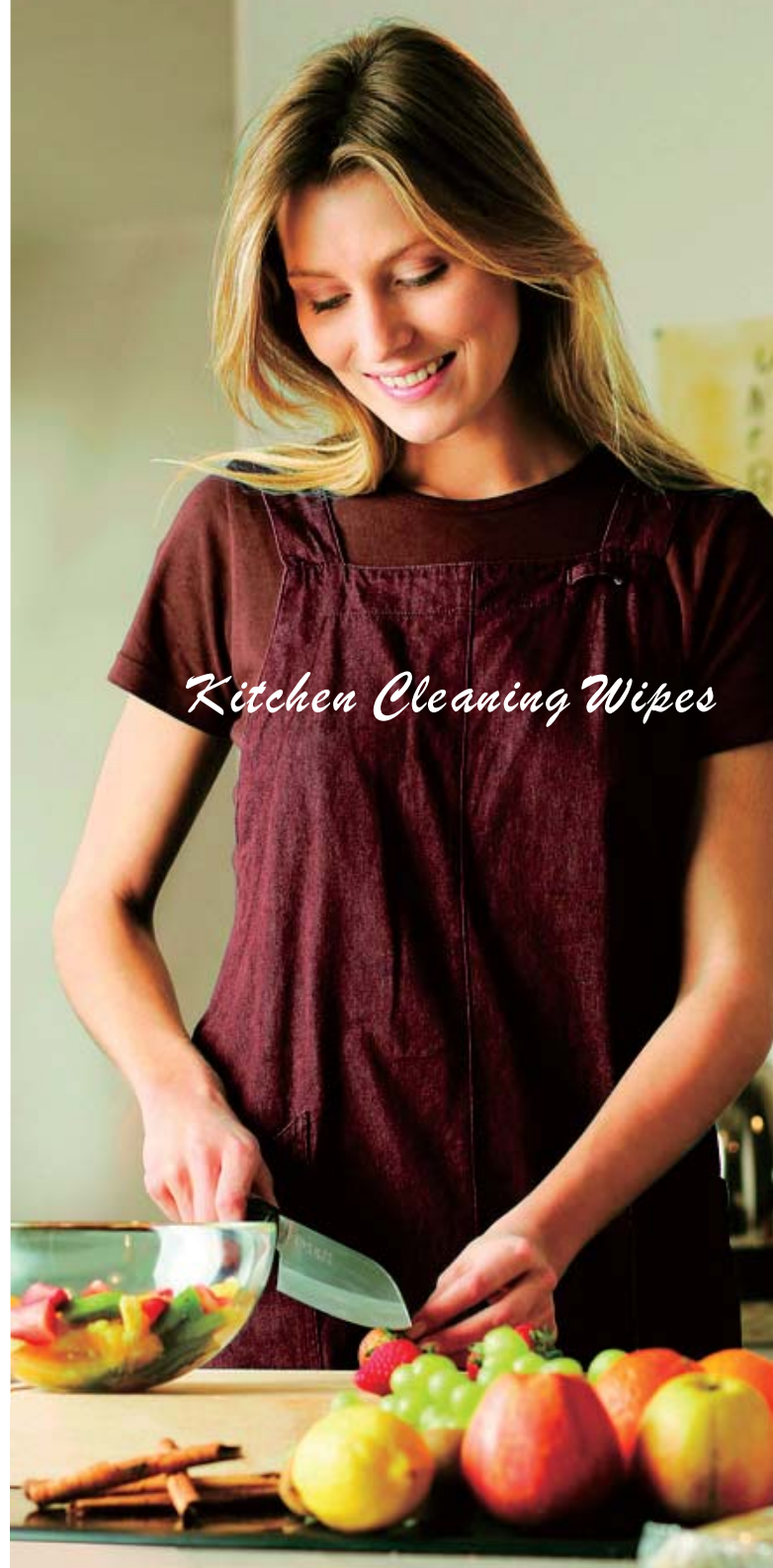
22100

CASE Pack	24	24
SHEET SIZE	15x20cm	6"x8"
CASE Weight	19kgs	41.8lbs
CASE Dimensions	43x34x22cm	17.2"x13.6"x8.8"
UNIT Weight	0.61kgs	1.342lbs
UNIT Dimensions	20x10x5.5cm	8"x4"x2.2"



3350

CASE Pack	96	96
SHEET SIZE	15x20cm	6"x8"
CASE Weight	11kgs	22lbs
CASE Dimensions	66x44x51cm	26.4"x17.6"x20.4"
UNIT Weight	0.1kgs	0.22lbs
UNIT Dimensions	20x10x5.5cm	8"x4"x2.2"





4410

SS Wet Wipe Dispenser

QTY/CTN	1	1
Bucket dimension	Dia 30x25cm	12"x4"
UNIT DIMENSION	33cmx91cm	13.2"x36.4"
WEIGHT/CTN	12kgs	26.4lbs
CARTON DIMENSION	38x38x94cm	15.2"x15.2"x37.6"

Assessories



